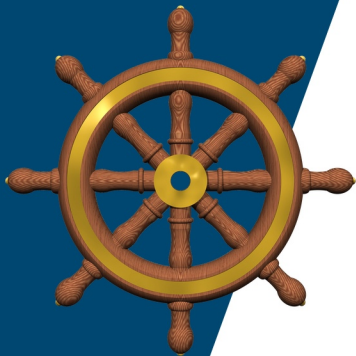


# WHEELHOUSE 3

## PPU SOFTWARE



**Developed with pilots  
for over 20 years.**



Wheelhouse 3 by Bowditch Navigation is ship navigation software for portable pilot units. Developed with pilots for over 20 years, Wheelhouse 3 provides a simple interface to software that meets sophisticated piloting requirements.

### HIGHLIGHTS

- Route-based navigation utilizing recognized centerlines and channel edges.
- Cross track indicator keeps pilots informed about distance from center of channel.
- Customizable map views to easily recall a range of chart details, from simple to complex.
- Supports redundancy and failover for position, heading, and remote vessels.
- Tailored for each port with feature set driven by pilot requests.
- Includes weekly chart updates from NOAA.
- Sounding and buoy updates available weekly, monthly, quarterly, or on demand.
- Incorporates private surveys from dock owners and other non-government sources.
- Includes Wheelhouse Update for automatic download of software and data subscription services.
- Supports both Windows tablets and conventional laptops.



Revised 9/21/2022



## SUPPORT

- 24/7 Phone and Internet support from Texas.
- On-site support available either full-time or upon request.
- Bowditch certified trainers available at training schools or your site.

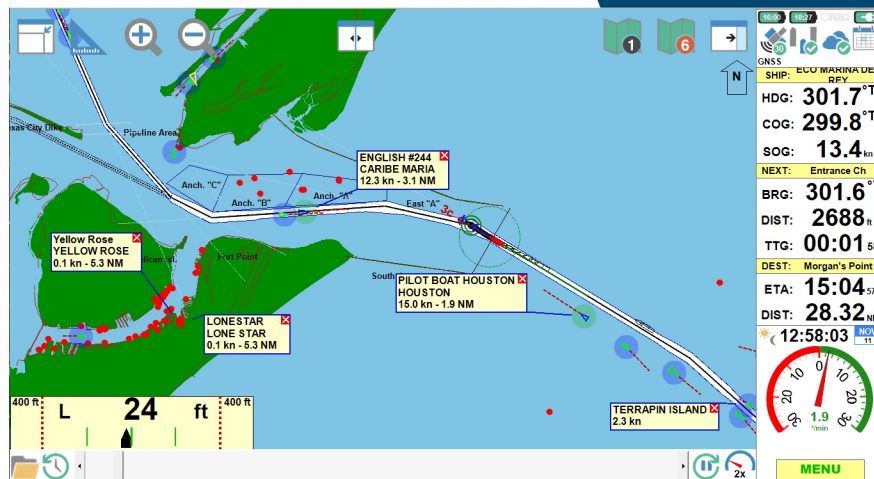
## FEATURES

### REDUNDANT DATA SOURCES

- Position from GNSS or pilot plug.
- Heading from ship's gyro, AIS device, or GNSS.
- Remote vessels from SEND server, pilot plug, or Internet-based AIS feed.

### CUSTOMIZABLE

- Choose layers for six different chart views.
- Specify colors for charts, vessels, soundings, windows, tags, annotations, and more.
- Make sounding and depth colors easy to distinguish.
- Choose the meta data and navigation parameters to display on vessel tags.
- Adjust icons and text size to find the right balance of readability and information content.



### OPERATING MODES

- Normal - day-to-day ship movements.
- Simulator - for training and port planning.
- Monitor Mode - for the big screen at the office.
- Log Replay - for training and investigation (see screen shot).

## COMPANY BACKGROUND

Bowditch Navigation is a leader in providing reliable, high-performance marine navigation aid systems, historically and today. We are focused on solutions for ship pilots. In 2001, Raven acquired Starlink, Inc., a company that pioneered many GPS technologies, including developing the industry's first MSK Beacon/DGPS receiver. Along with Raytheon Service Company and Capt. Joseph Bradley of The Pilot's Association for the Bay and River Delaware, Starlink developed the first GPS-based portable pilot unit in 1991. In 2017, Bowditch Navigation acquired the assets of the Raven Marine Navigation business. Today, Bowditch Navigation continues to foster Starlink's rich tradition of developing innovative GPS solutions for marine applications worldwide.



**BOWDITCH**  
NAVIGATION

Revised 9/21/2022