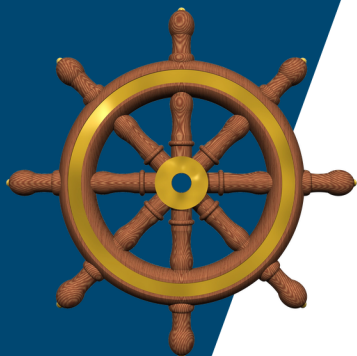


WHEELHOUSE 4

PPU SOFTWARE



Developed with pilots
for over 20 years.



Wheelhouse 4 by Bowditch Navigation is ship navigation software for portable pilot units. Developed with pilots for over 20 years, Wheelhouse 4 provides a simple interface to software that meets sophisticated piloting requirements.

HIGHLIGHTS

- Route-based navigation utilizing recognized centerlines and channel edges.
- Cross-track indicator displays the distance from the center of the channel.
- Customizable map views show the desired chart details.
- Supports redundancy and failover for position, heading, and remote vessel data.
- Tailored for each port with feature set driven by pilot requests.
- Easily customized to meet the specific needs of your pilot group.
- Includes weekly chart updates from NOAA.
- Sounding and buoy updates available weekly, monthly, quarterly, or on demand.
- Incorporates private surveys from dock owners and other non-government sources.
- Includes Wheelhouse Update for automatic download of software and data subscription services.
- Supports both Windows tablets and conventional laptops.

SUPPORT

- 24/7 Phone and Internet support from Texas.
- On-site support available either full-time or upon request.
- Bowditch certified trainers available at training schools or your site.



Revised 9/21/2022

WHEELHOUSE 4

PPU SOFTWARE

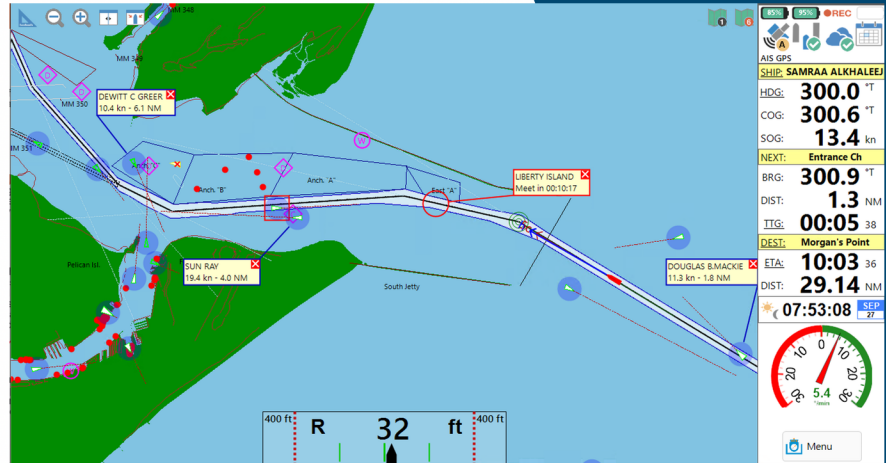
FEATURES

REDUNDANT DATA SOURCES

- Position from GNSS or pilot plug.
- Heading from ship's gyro, AIS device, or GNSS.
- Remote vessels from SEND server, pilot plug, or Internet-based AIS feed.

CUSTOMIZABLE

- Choose layers for six different chart views.
- Specify colors for charts, vessels, soundings, windows, tags, annotations, and more.
- Make sounding and depth colors easy to distinguish.
- Choose the metadata and navigation parameters to display on the vessel and intercept tags.
- Adjust icons and text size to find the right balance of readability and information content.
- Split screen mode to allow multiple views of the pilotage area.
- Dispatch notices - geolocated local notices to mariners, controlled by the pilot group.



OPERATING MODES

- Normal - day-to-day ship movements.
- Simulator - for training and port planning.
- Monitor Mode - for the big screen at the office.
- Log Replay - for training and investigation (see screen shot).

WHAT'S NEW FOR WHEELHOUSE 3 USERS

Wheelhouse 4 marks a visual evolution of the software. We evolved our design language alongside Windows 11.

- Effortless - Wheelhouse 4 is faster and more intuitive. It adds a search feature to find important but rarely used features.
- Calm - Wheelhouse 4 is softer and decluttered; rounded button outlines, smaller icons, and updated fonts maximize legibility and readability. The experience feels warm, ethereal, and approachable.
- Personal - Wheelhouse 4 adapts to the way that you pilot. Chart buttons and the main menu are customizable, making frequently used features more accessible. It bends and flexes to your individual needs and preferences.
- Consistent - The program uses the same visual imagery and symbols as Wheelhouse 3. In addition, hotkeys are the same as Wheelhouse 2 and 3, reusing your muscle memory.

Wheelhouse 4 balances a new, refreshed look and feel with the familiarity of the Wheelhouse 3 that you already know. There is no learning curve; pick it up and go.

COMPANY BACKGROUND

Bowditch Navigation is a leader in providing reliable, high-performance marine navigation aid systems, historically and today. We are focused on solutions for ship pilots. In 2001, Raven acquired Starlink, Inc., a company that pioneered many GPS technologies, including developing the industry's first MSK Beacon/DGPS receiver. Along with Raytheon Service Company and Capt. Joseph Bradley of The Pilot's Association for the Bay and River Delaware, Starlink developed the first GPS-based portable pilot unit in 1991. In 2017, Bowditch Navigation acquired the assets of the Raven Marine Navigation business. Today, Bowditch Navigation continues to foster Starlink's rich tradition of developing innovative GPS solutions for marine applications worldwide.



Revised 9/21/2022